

# SUMATRAN TIGER PROJECT PRIORITY LANDSCAPE PROTECTION PATROL

The Transforming Effectiveness of Biodiversity Conservation in Priority Sumatran Landscapes Project (TIGER Project) aims to increase biodiversity conservation efforts in priority landscapes in Sumatra, through the implementation of best management practices in protected areas and adjacent production areas, using sumatran tiger recovery as a key indicator of success.

One of the success indicator of this project is an increase of effort in law enforcement patrol in each landscape.



**RESORT-BASED MANAGEMENT  
(RBM) APPROACH**



**Using  
SMART-RBM**

(Spatial Monitoring and Reporting Tool-  
Resort Based Management)

Conducting SMART-RBM patrols on a regular basis will have an impact on reducing the number of threats and crime against Sumatran tigers

## POSITIVE RESULTS FROM PATROL ACTIVITY



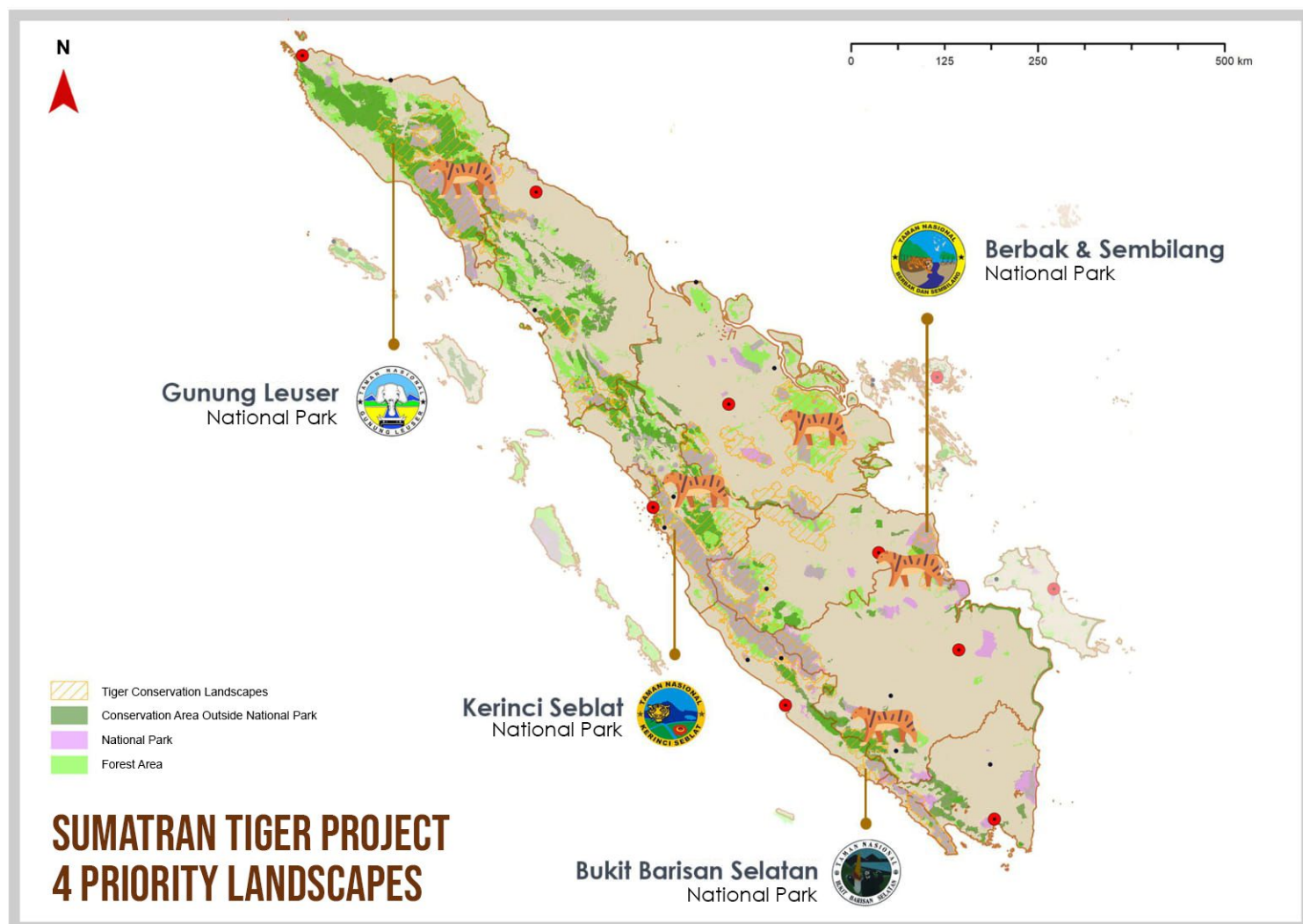
**Threat Level  
Decreased**



**Patrol Coverage  
Increased**

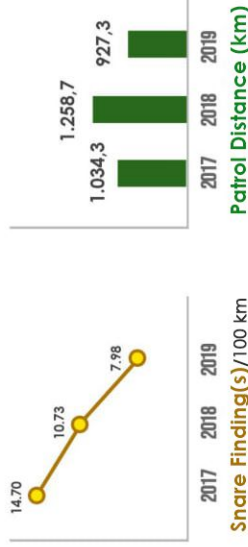
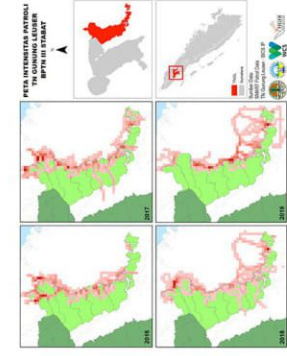


**Multiple Participation  
Increased**





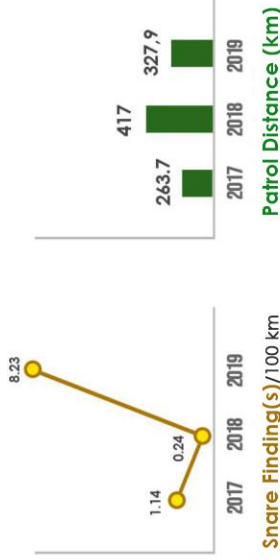
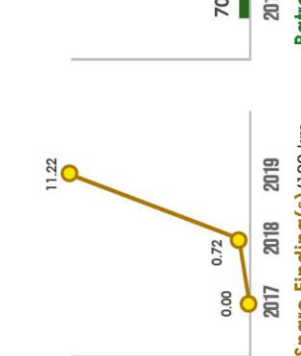
### GUNUNG LEUSER NATIONAL PARK



The number of snare findings has declined in the last 3 years. Patrols at GLNP can be done more effectively, even though both patrol areas are smaller.



### BERBAK & SEMBILANG NATIONAL PARK

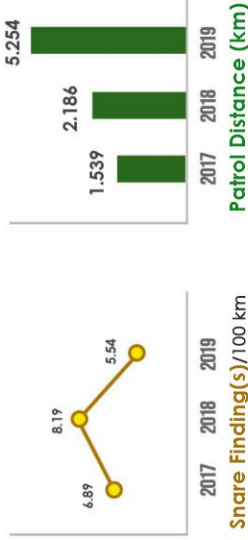
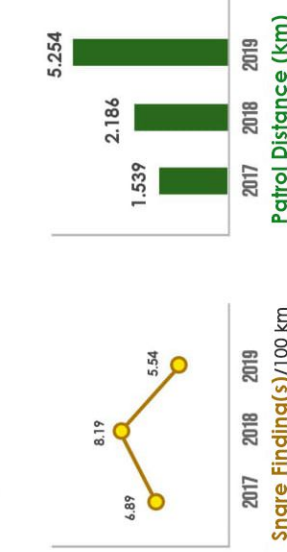


Berbak Landscapes

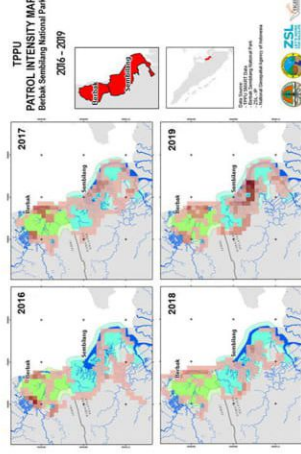
Sembilang Landscapes



### KERINCI SEBLAT NATIONAL PARK



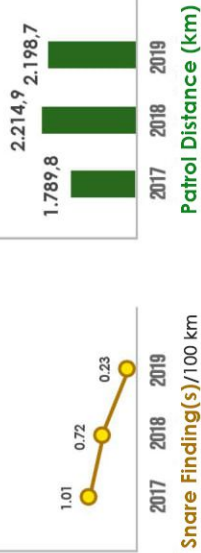
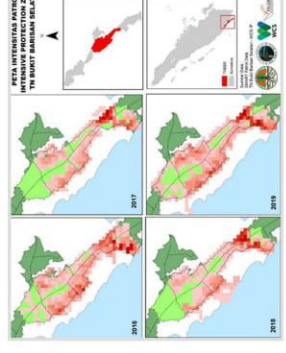
Patrol coverage increases, as in the Kerinci Seblat landscape, compared to the last 3 years. This shows positive correlation with the decrease in the number of threats encountered during patrol



Patrol gives positive impact if done consistently. This can be seen from the data in Sembilang National Park and Berbak National Park which tend to have no visible relationship between patrol efforts and threat trends



### BUKIT BARISAN SELATAN NATIONAL PARK



The number of snare findings has declined in the last 3 years. Patrol distance is increasing in 2018. Patrols at GLNP can be done more effectively, even though both patrol areas are smaller.

# PATROL AND SNARE REDUCTION EFFORTS

